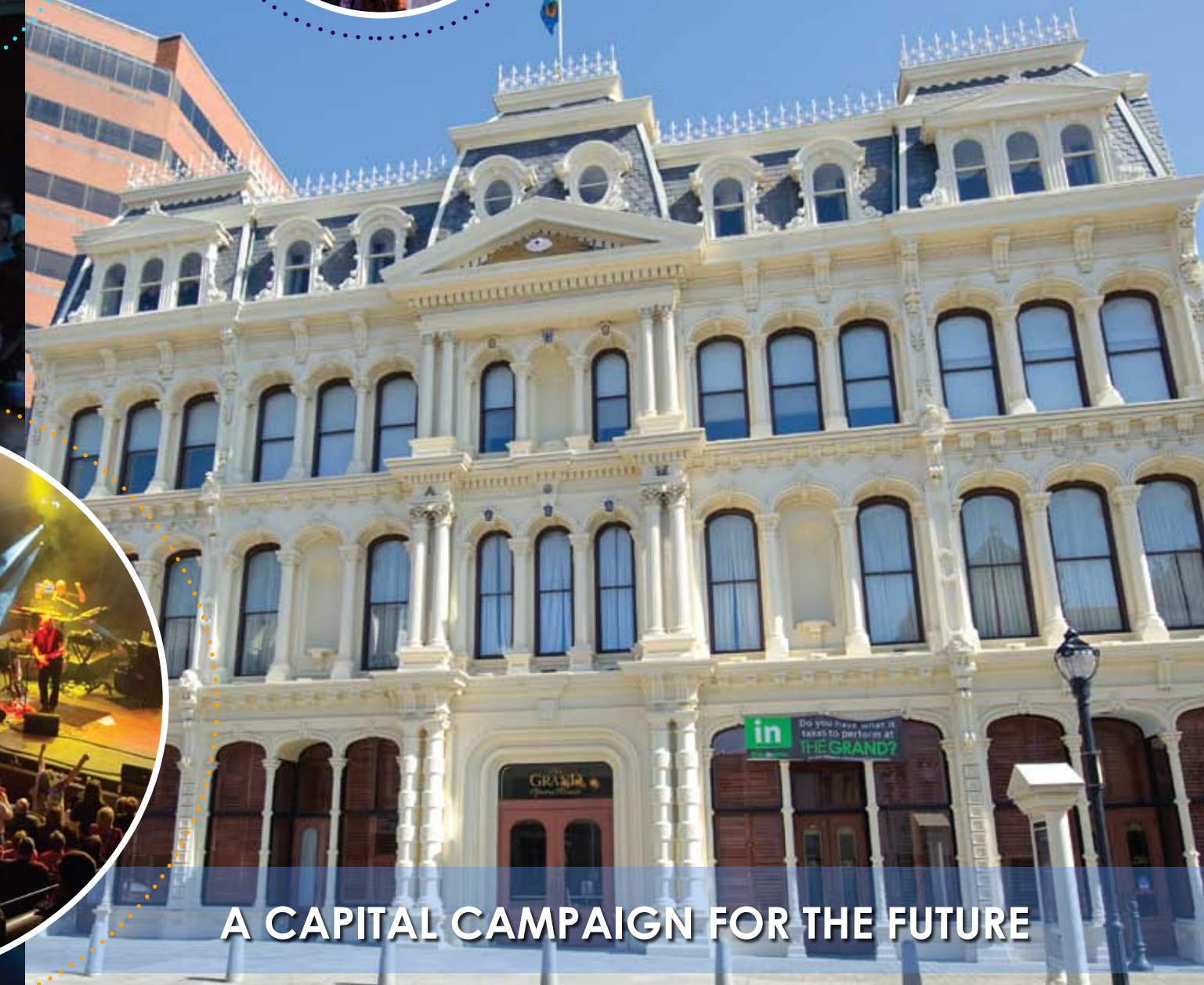


To **establish a strong foundation** for **future** success, The Grand is in the midst of a carefully planned capital campaign to raise \$10 million for:

- Reinvestment in capital infrastructure (\$2.8 million), to upgrade systems and equipment, invest in green technology, and complete deferred repairs.
- Retire residual debt and capitalized interest (\$4.5 million) that hinders investment in future community education programs, new artistic programming, and operational stability.
- Endowment support (\$2.7 million) to enhance operating income and assure broader community service programming that is not self-sustaining.

Building upon **dynamic** artistic programming and improved operational efficiency, the campaign will place The Grand on a **sustainable** course by supporting **four key pillars** of the historic building and its resident organizations: **experience, community, venue, and future.**



A CAPITAL CAMPAIGN FOR THE FUTURE

IMAGINE YOUR GRAND TOMORROW

The Grand Opera House is an **historic** and **beautiful** performing arts venue with unmatched acoustics and architecture that serves as a **symbol** of the arts and culture in Delaware. To position itself for **future success**, The Grand Opera House has undertaken an energetic transformation by diversifying its programming, reducing operational costs, and strengthening relationships within the arts community.



A GRAND EXPERIENCE

The Grand offers its patrons a unique entertainment experience unmatched by other performing arts organizations, both on and off the stage. Exciting community events, arts education opportunities, and performances by artists as diverse as **Chris Boffi**, **Buddy Guy**, **Lewis Black**, **Emmylou Harris**, and **Esperanza Spalding** are provided year-round by The Grand and its resident companies, **Delaware Symphony Orchestra**, **OperaDelaware** and **First State Ballet Theatre**.

In addition to its main stage and baby grand artist series, The Grand serves **15,000** school children annually with educational programming, including the Stage of Discovery school matinees, Summer Children's Theater, the Arts Academy at The Grand, and DanceWorks. The Grand also **enlivens** Wilmington's cultural life through its Summer Salon Series on Market Street, IN The Spotlight talent competition, and master classes and workshops that offer interaction with noted artists.

A GRAND COMMUNITY

The Grand **enhances** the quality of life in the region and contributes to a thriving downtown Wilmington. Patrons, volunteers, a **dedicated staff**, the **Board of Directors**, and **Trustees** ably support The Grand's educational outreach programs and partner arts organizations. The Grand and its partners are committed to enriching the cultural life of community residents, including **150,000** patrons, students, and concertgoers who visit downtown Wilmington every year.

Current partnerships include:

- Arden Concert Guild
- Bengali Association of the Delaware Valley
- Brandywine Friends of Old Time Music
- Christina Cultural Arts Center
- City of Wilmington, Office of Cultural Affairs
- Delaware Institute for the Arts in Education
- Delaware Symphony Orchestra
- First State Ballet Theatre
- Green Willow Folk Club
- Jewish Federation of Delaware
- OperaDelaware
- Wilmington Children's Chorus
- Wilmington Renaissance Corporation

A GRAND VENUE

The Grand is one of Delaware's most **celebrated** and **beautiful** venues. Between its resident performing companies, local events, and rentals, the building hosts more than **300** events a year. **Accessible**, **historic**, and **culturally unique**, the venue plays host to a variety of public events and activities and provides a welcoming atmosphere for all who visit.

In addition to the elegant 1,200-seat opera house, The Grand offers an intimate 300-seat modern theater, the baby grand, housed in the Edith and Alexander F. Giacco Building. This **versatile hub** hosts many of The Grand's community engagement and service programs, and is home to attractive public rental spaces, offices, classrooms, and teaching studios.

A GRAND FUTURE

By **expanding** its season, **strengthening** its community programs, and **developing** green technology, The Grand is positioning itself for a **sustainable** future. With more **frequent** and **diverse** artistic programming, **innovative** arts **experiences** for children, families, and schools, and life-long learning through the arts, The Grand is uniquely qualified to showcase the richness and diversity of Delaware's performing arts community for years to come.



MAKE A LASTING IMPRESSION!

You, your family, or a friend can be honored through your gift to The Grand. Please review the list of **Campaign Dedication Opportunities** that include pavers outside The Grand's entrance, seats in the performance spaces, public rooms, offices, stages, theaters and lobbies. Then complete the **Donor Recognition** section on your pledge form - or contact Geoffrey Harrington at The Grand.

MAKE A GIFT TODAY!

Become a part of the growing community support for the Imagine Your Grand Tomorrow campaign - complete the enclosed pledge form and mail it today to the address below. Gifts and pledges of cash, securities, personal property, real estate, and retirement account funds are all welcome.

If you have questions about ways to support the Campaign, and recognition opportunities, or for assistance in making your gift, please contact:

Geoffrey Harrington, Director of Development
The Grand Opera House
818 North Market Street, Wilmington, DE 19801
302-658-7897 ext. 3100
gharrington@grandopera.org
www.TheGrandWilmington.org

JOIN THESE ENTHUSIASTIC VOLUNTEERS IN SUPPORTING THE GRAND

Led by a cross-section of community leaders dedicated to the arts and culture, the Imagine Your Grand Tomorrow campaign seeks the active support of those who believe in the importance of cultural institutions to the economic vitality and quality of life of the region. Generous financial commitments of three years or more by hundreds of donors are necessary to assure the campaign's

HONORARY CHAIR
Tatiana Copeland

HONORARY CO-CHAIRS
Linda and Bob Harra
Ellen and Michael Kullman
Evelyn and Harry Russell
Sharon and Ric Struthers

CAMPAIGN CHAIR
Brian DiSabatino

COMMITTEE CHAIRS
Dana Brown
Fred Dawson
Todd Flubacher
Michael Gallagher
Jimmy Hackett
David Ley Hamilton
Shaila Kapur
Roger Kirtley
Ellen Levin
William Montgomery
Beth Press
Charisse Rodgers
Salvatore "Chip" Rossi
Penny Saridakis
Kristen Shaw
Elaine Singleton

LEADERSHIP COUNCIL
Governor Jack Markell
U.S. Senator Tom Carper
U.S. Senator Ted Kaufman
U.S. Representative Mike Castle
County Executive Chris Coons
Mayor James M. Baker

BOARD CHAIR
Francis "Skip" Pennella

CAMPAIGN STAFF
Stephen Bailey
Mark Fields
Geoff Harrington
Julie Shanahan

CAMPAIGN COUNSEL
Susan Sherk
Wilfred Sherk



Photo credits:
Doc Huot, Joe del Tufo, Nancy JL Powell